

Industrial + Commercial Portfolio

2023



Dedicated Professional Practice

Chartered Practice

Qualified Staff

Quality Systems

Vast Experience

BIM Systems

CDM Services

DHA ARCHITECTS

www.dhaa.co.uk



Last updated 231101_MN

Belushi's Bar, Hammersmith

RIBA Stages 0-7

Refurbishment + Extension

DHA Architects have carried out 2 elements of work at this landmark Grade II Listed building on Hammersmith Broadway for Beds and Bars.

Firstly, a complete refurbishment of the ground floor pub was completed, including a new bar and improvements to the accessibility and sanitaryware facilities, creating an inviting and vibrant atmosphere to improve business throughout the day.

Secondly, planning approval was obtained for the refurbishment of the existing upper floor hostels along with a rear extension to increase capacity.

Industrial + Commercial



DHA ARCHITECTS



St Christopher's Inn, London

RIBA Stages 0-7

Refurbishment + Extension

DHA have undertaken an extensive refurbishment and extension of this 19th Century building on Borough High Street for a back-packer hostel and bar operator, Beds and Bars.

The challenging site within a conservation area required a "light touch" approach to create additional hostel accommodation within a 3 storey rear extension and new mansard roof addition.



DHA ARCHITECTS

Industrial + Commercial



Powell Street Studio's, Birmingham

RIBA Stages 0-7

Refurbishment

DHA undertook a complete refurbishment of this disused industrial warehouse to transform it into a bright and contemporary office space.

A complete upgrade of the building envelope was undertaken, earning the Federation of Master Builders Energy Efficiency Awards.

The existing superstructure and external cladding were retained with the addition of a mezzanine extension, new glazing to the front elevation, glazed partitions, WC and kitchen facilities and M&E services.

The practice now occupies one floor of the building.



DHA ARCHITECTS

Industrial + Commercial



The Forge Kidderminster

RIBA Stages 0-7

Refurbishment + Extension

DHA were appointed to undertake a change-of-use, refurbishment and extension of an existing disused warehouse to create a new die-casting plant for an international engineering firm.

Close liaison with the client and Local Authority was required to ensure the successful regeneration of this key employment site. DHA worked closely with a team of specialist consultants throughout the planning and construction stages.



DHA ARCHITECTS

Industrial + Commercial



Homelands, Bishop's Cleeve

RIBA Stages 4-5

New Build

DHA Architects were appointed to take on an extant planning approval for 3 commercial units as part of a larger residential village extension scheme.

The practice worked closely with the developer and prospective tenants to amend the approved scheme to cater for adapting commercial requirements, culminating in a revised planning approval.

In addition, the scheme slots into a wider design strategy for the village and the progressing design had to maintain the aesthetic concept of the original consent, whilst providing suitable accommodation for a variety of different tenant types.



DHA ARCHITECTS

Industrial + Commercial



Premier Waste, Birmingham

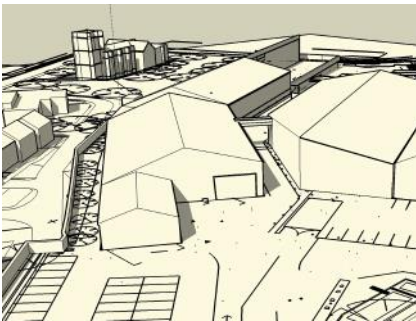
RIBA Stages 0-7

New Build + Extension

DHA were engaged by a recycling company to re-configure their existing waste transfer station, which occupied a 1.6Ha site north of Birmingham city centre.

An existing recently-completed waste transfer building was extended, whilst a storage and maintenance building was re-built.

The practice worked closely with the recycling company to ensure the most efficient use of space was achieved both on the site and within the buildings.



DHA ARCHITECTS

Industrial + Commercial



Frank Allart, Birmingham

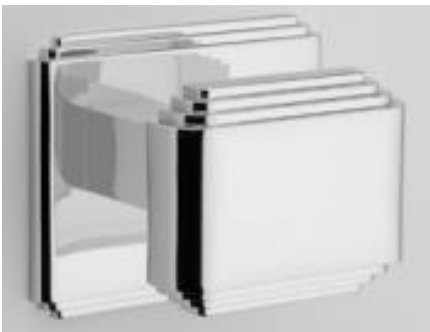
RIBA Stages 0-7

Refurbishment + Extension

DHA were commissioned to re-locate a prominent local ironmongery manufacturer to a new premises, enabling them to consolidate their manufacturing and office space into one building and introduce new, more efficient ways of working.

The project involved the creation of new office facilities and the complete refurbishment of an existing steel-framed production facility.

The office elements were designed to reflect the high quality “Art Deco” designs for which the manufacturer is known and provide 4000sqft of office and meeting space.



DHA ARCHITECTS

Industrial + Commercial



Sainsbury's Local, Cheltenham

RIBA Stages 0-5

New Build

This project involved the demolition and remediation of a disused petrol station site to create a new convenience store development.

A steel frame was utilised to make the most efficient use of a tight and irregular site footprint.

A mixture of masonry, aluminium roofing and cladding and natural stone were employed to create the bold architectural statement required of the site which formed a focal point on the entry to a Conservation Area.



Industrial + Commercial



DHA ARCHITECTS

Energy Centre, Kidderminster

RIBA Stages 4

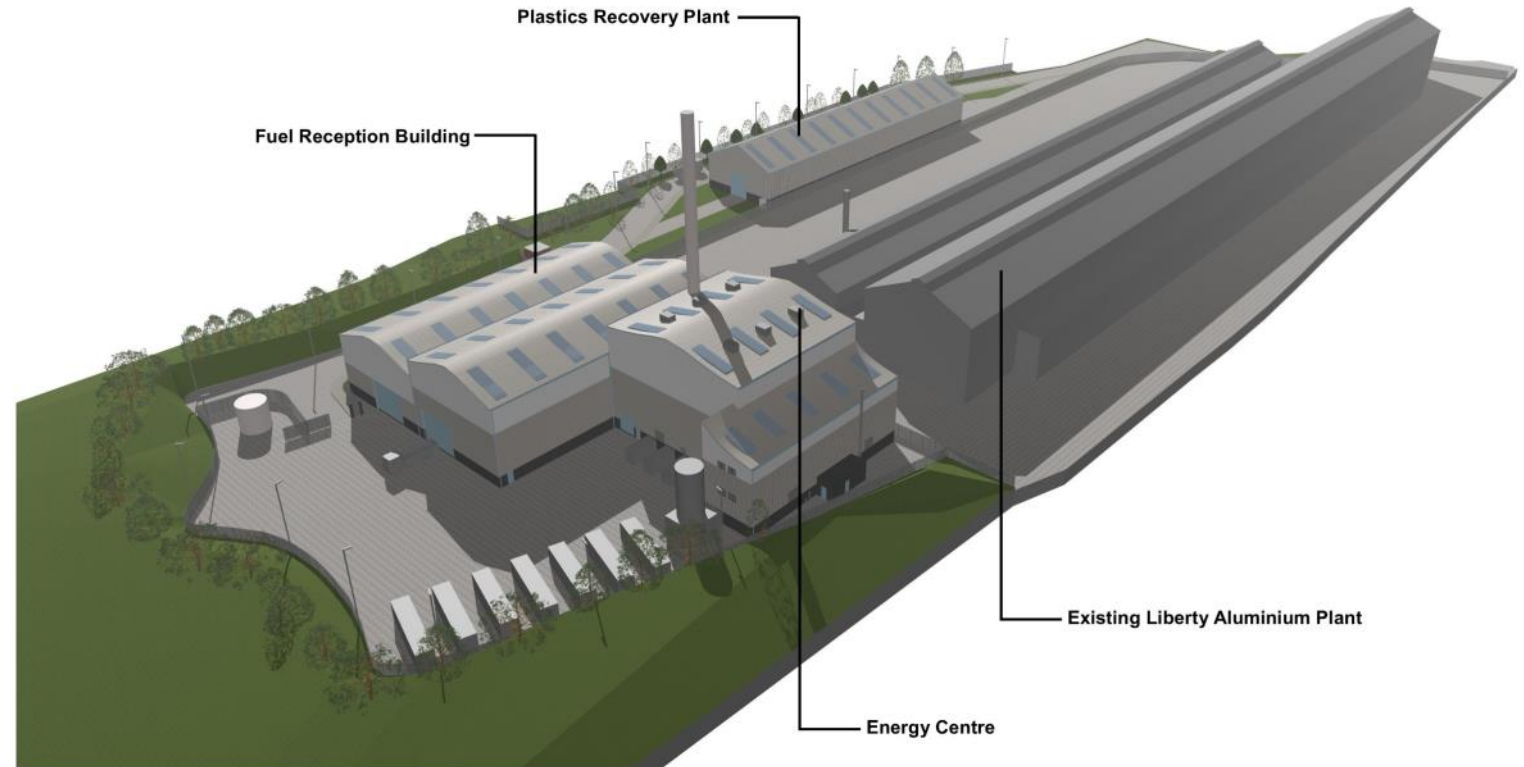
New Build

DHA Architects have been working on a project to construct a new energy and resource centre on a large site in Kidderminster.

The practice has worked alongside an extensive design team to develop a scheme which will enable the end user to use waste plastic material, which would otherwise be taken to landfill, as raw material for sustainable power generation.

The practice has also had to work closely with other specialist consultants to develop a sensitive response to the existing context, including environmental and ecological, flood risk, infrastructure and noise constraints.

Industrial + Commercial



DHA ARCHITECTS



Sectors we cover

- Ecclesiastical
- Health
- Education
- Residential
- Community
- Conservation
- Commercial



DHA ARCHITECTS

www.dhaa.co.uk

