

Industrial + Commercial Portfolio

2019



Small Professional Practice  
Chartered Practice  
Qualified Staff  
Quality Systems  
Vast Experience  
3D technology  
CDM Services

DHA ARCHITECTS

[www.dhaa.co.uk](http://www.dhaa.co.uk)



## Powell Street Studio's, Birmingham

RIBA Stages A-L

### Refurbishment

DHA undertook a complete refurbishment of this disused industrial warehouse to transform it into a bright and contemporary office space.

A complete upgrade of the building envelope was undertaken.

The existing superstructure and external cladding were retained with the addition of a mezzanine extension, new glazing to the front elevation, glazed partitions, WC and kitchen facilities and M&E services.

The practice now occupies one floor of the building.



DHA ARCHITECTS

Industrial + Commercial



## Premier Waste, Birmingham

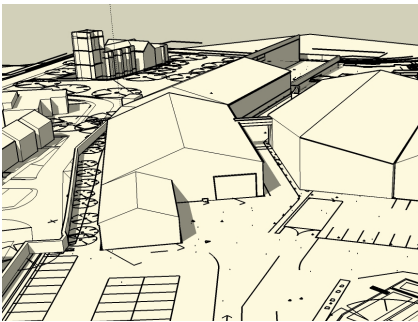
RIBA Stages A-L

### New Build + Extension

DHA were engaged by a recycling company to re-configure their existing waste transfer station, which occupied a 1.6Ha site north of Birmingham city centre.

An existing recently-completed waste transfer building was extended, whilst a storage and maintenance building was re-built.

The practice worked closely with the recycling company to ensure the most efficient use of space was achieved both on the site and within the buildings.



DHA ARCHITECTS

Industrial + Commercial



## Belushi's Bar, Hammersmith

RIBA Stages A-L

### Refurbishment + Extension

DHA Architects have carried out 2 elements of work at this landmark Grade II Listed building on Hammersmith Broadway for Beds and Bars.

Firstly, a complete refurbishment of the ground floor pub was completed, including a new bar and improvements to the accessibility and sanitaryware facilities, creating an inviting and vibrant atmosphere to improve business throughout the day.

Secondly, planning approval was obtained for the refurbishment of the existing upper floor hostels along with a rear extension to increase capacity.

Industrial + Commercial



DHA ARCHITECTS



## Frank Allart, Birmingham

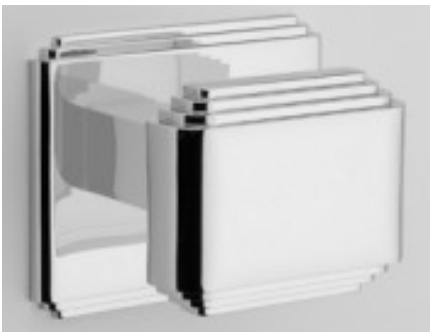
RIBA Stages A-L

### Refurbishment + Extension

DHA were commissioned to re-locate a prominent local ironmongery manufacturer to a new premises, enabling them to consolidate their manufacturing and office space into one building and introduce new, more efficient ways of working.

The project involved the creation of new office facilities and the complete refurbishment of an existing steel-framed production facility.

The office elements were designed to reflect the high quality “Art Deco” designs for which the manufacturer is known and provide 4000sqft of office and meeting space.



DHA ARCHITECTS

Industrial + Commercial



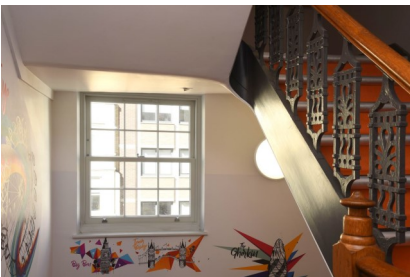
## St Christopher's Inn, London

RIBA Stages 0-7

### Refurbishment + Extension

DHA have undertaken an extensive refurbishment and extension of this 19th Century building on Borough High Street for a back-packer hostel and bar operator, Beds and Bars.

The challenging site within a conservation area required a "light touch" approach to create additional hostel accommodation within a 3 storey rear extension and new mansard roof addition.



DHA ARCHITECTS

Industrial + Commercial



## The Forge Kidderminster

### Refurbishment + Extension

DHA were appointed to undertake a change-of-use, refurbishment and extension of an existing disused warehouse to create a new die-casting plant for an international engineering firm.

Close liaison with the client and Local Authority was required to ensure the successful regeneration of this key employment site. DHA worked closely with a team of specialist consultants throughout the planning and construction stages.



DHA ARCHITECTS

Industrial + Commercial



# Sainsbury's Local, Cheltenham

RIBA Stages 0-5

## New Build

This project involved the demolition and remediation of a disused petrol station site to create a new convenience store development.

A steel frame was utilised to make the most efficient use of a tight and irregular site footprint.

A mixture of masonry, aluminium roofing and cladding and natural stone were employed to create the bold architectural statement required of the site which formed a focal point on the entry to a Conservation Area.



Industrial + Commercial



DHA ARCHITECTS





**Sectors we cover**

- Ecclesiastical
- Health
- Education
- Residential
- Community
- Conservation
- Commercial



DHA ARCHITECTS

[www.dhaa.co.uk](http://www.dhaa.co.uk)

