

# PROJECT DATASHEET

St Anne's Home

Stoke Newington



**DHA ARCHITECTS**



New Courtyard with Protected Trees

**LOCATION:**

**St Anne's Home**

**Manor Road, Stoke Newington, London**

**CLIENT:**

**The Little Sisters of the Poor**

**VALUE: £25 million**

**COMPLETED: 2009**

The design of this new-build home presented a truly challenging architectural opportunity—to design with mission in mind.

The new home provides dual care nursing and elderly accommodation together with apartments for the more able within an independent living environment. Unusually for this building type, it also includes convent accommodation for the Sisters, a large chapel, auditorium, café and shops as well as facilities for arts and crafts, hairdressing and a library to form a home which is truly outstanding.

From the outset, the success of this project lay in the relationship between the client and the architects. For the Sisters, building a new home always represents a chance to express their developing vision and desire to meet the aspirations of the elderly poor today and in providing an opportunity to express their essential philosophy of saying “Yes” to life with vigour and vitality. This relationship demanded trust and a particular form of collaboration to enable the smallest of needs to be addressed and incorporated to make the design truly effective. From the beginning, the Sisters embraced the initial design concepts to break the mould and create a building which celebrates care for the elderly with imagination and an evocative form.



Existing Home prior to Demolition





Interior View of Completed Chapel

In response, DHA Architects have created an inspirational building. With its curvaceous forms, corridors and spaces, it fuses the material world with the work of generating creative, calming and serene spaces in which to inspire, lead and safeguard the elderly and infirm. The architectural forms allow changing natural light to permeate the inner spaces, creating a dynamic that enhances and fosters a sense of mystery, discovery and tranquillity.



Interior View of Completed Dining Room

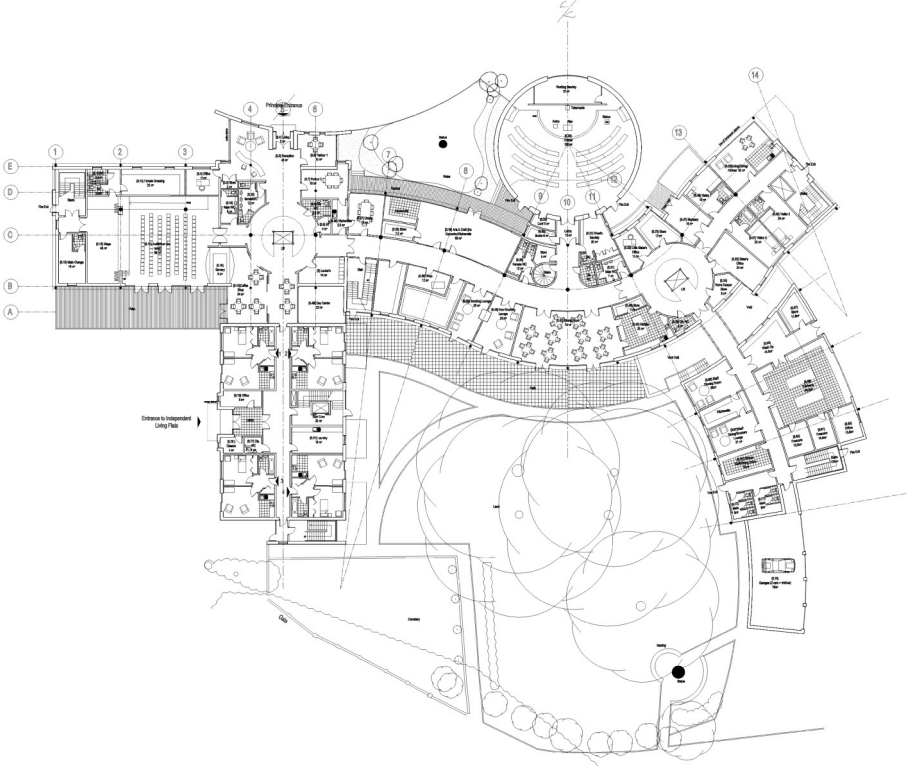
The site adjoins the former Victorian Abney Park Cemetery in Hackney which, today, is a protected local nature reserve. The maintenance of the original 18th Century parkland provides a uniquely rural aspect to the home, despite its proximity to central London. The importance of this natural beauty has been captured in the enclosure of the 2 courtyards which form the gardens and, together with the Southerly orientation, provide the main outlook from the principal social functions of dining, talking and meeting.



Interior View of Completed Atrium

Within the building, 2 atria spaces domesticate the scale of the building by providing vertical arterial routes with entry to key accommodation areas and enable natural light and ventilation to penetrate and maintain a sense of freshness and visual dexterity.





Ground Floor Plan



View Towards Assisted Living Apartments across Courtyard

Technically, each interior space has been designed to maximise excellent acoustic characteristics to eliminate any unsettling noise and to create a quiet and restful atmosphere. Optimisation of the structure's thermal mass has been exploited to maximise energy efficiency and achieve cooling in the Summer and radiant heat retention in the Winter.

The choice of high performance durable materials to reflect the 100 year design life, allied with the beauty of the sweeping architectural forms, which flow around and embrace the circular chapel—the heart of the home—have created a distinct and memorable building. The objectives of designing with mission in mind has created a landmark identity which has already found a fondness in the hearts of the local community and is the perfect means of ensuring true sustainability into the future for the Little Sisters.