

Practice Profile 2019



Small Professional Practice
Chartered Practice
Qualified Staff
Quality Systems
Vast Experience
3D technology
CDM Services

DHA ARCHITECTS

www.dhaa.co.uk



Title:

PRACTICE PROFILE

Return Document;

33 Powell Street
Birmingham
B1 3DH

DHA document Reference;

A/160108_1
CFR: DHA 002 Practice Profile v.2

Date: 16 April 2019



DHA ARCHITECTS

CONTENTS

1.0 COMPANY INFORMATION

- 1.1 Practice Details
- 1.2 Company Details
- 1.3 Insurance Details
- 1.4 Financial Details

2.0 HEALTH, SAFETY AND ENVIRONMENT

- 2.1 Health and Safety
- 2.2 GDPR policy
- 2.3 Quality
- 2.4 Environmental Management

3.0 TECHNICAL CAPABILITIES

- 3.1 Construction Design Management—CDM
- 3.2 Computer Aided Design—CAD

4.0 CORPORATE CULTURE

- 4.1 Organisational Chart
- 4.2 Staff Development
- 4.3 Core Values
- 4.4 Employment Values
- 4.5 Equality and Diversity
- 4.6 “Fair payment”

5.0 APPROACH AND METHODOLOGY

- 5.1 Customer Service
- 5.2 Design Optimisation and Delivery
- 5.3 Performance Monitoring
- 5.4 Evaluation Procedures

6.0. MARKET POSITION

- 6.1 Business Strategy
- 6.2 Market Position
- 6.3 Competitive Difference
- 6.4 Key Success Factors

APPENDIX A - KEY PERSONNEL—CV's



Location;

33 Powell Street
Birmingham
B1 3DH

Tel: 0121 200 2638
Email: design@dhaa.co.uk
www.dhaa.co.uk



DHA ARCHITECTS

PRACTICEDETAILS

1.0

1.1 Profile

DHA Architects is a trading name for Daniel Hurd Associates Ltd (established in 1994) and is a progressive award winning RIBA Chartered Architectural Practice. Our approach is resolutely modern but with a sensitivity to tradition and context.

Our distinctive approach is centred on the personalities and design skills of the 3 principal Chartered Architects - Daniel, Ian and Mansoor to deliver a unique design and management service with total accessibility to our clients.

Our experience extends across various sectors include education, sports, ecclesiastical, residential, community and health care as well as working with listed buildings and other historical structures.

The Practice provides an innovative, forward looking professional service which takes into account new methods of working, commercial trends, social factors, energy management, environmental and safety issues.

We have extensive experience at working with public and private organisations, and charities where it is particularly important to work closely within established committee led arrangements and reporting procedures.

1.2 Company Details

Business Name:

Daniel Hurd Associates
Limited—Trading as DHA
Architects

Bank Details

HSBC Sutton Coldfield
The Parade
Daniel Hurd Associates
Ltd
Sort Code 40-43-28
Acc No: 21878441

**Company Registration
Number:**
OC336664

The Directors

Daniel Hurd (MD)
Ian Allerston
Mansoor Nazir

Associates

Phil Cooksey

Date Business Formed
2nd June 1994

**Date Business became
Limited**
01 April 2014



DHA ARCHITECTS

COMPANY INFORMATION

1.3 Insurance Details

Professional Risk Indemnity Insurance.

INSURANCE	OVERALL VALUE PA	VALUE PER INCIDENT	EXPIRY DATE	INSURER	POLICY NUMBER
PI	Unlimited	5,000,000	20/07/19	MANCHESTER UNDERWRIT- ING MANAGE- MENT LIM- ITED AiB	PI18U10047 5A
EMPLOYERS LIABILITY	Unlimited	5,000,000	01/07/19	RSA	RSHD00132 76WM9314
PUBLIC LIABILITY	Unlimited	5,000,000	01/07/19	RSA	RSHD00132 76WM9314
PRODUCT LIABILITY	2,000,000	5,000,000	01/07/19	RSA	RSHD00132 76WM9314

1.4 Financial Details

	2018	2017	2016
COMPANY ANNU- AL TURNOVER	£338,080	£272,698	£238,942
NET PROFIT BE- FORE TAX	£114,858	£84,507	£84,507
NET PROFIT AF- TER TAX	£89,974	£68,214	£98,831

Details; insurance Brokers:

AiB
Unit 46 Pure Offices Plato
Close Tachbrook
Park Leamington Spa
CV34 6WE
t : 0121 647 4778
f : 0872 115 7505
www.aib.uk.com

Contact: Brendan Mulligan
Tel: 0121 240 9851

What the Employee should know.....

'Your health, safety and welfare are protected by law. Your employer (DHA Architects) has a duty to protect and keep you informed about health and safety. You have a responsibility to look after others. If there is a problem, discuss it with your employer or safety representative.'

[Source: Health and Safety Law, 1st October 1999, published by the Health & Safety Executive].

HEALTH & SAFETY

2.1 Health & Safety

Our policy is to provide and maintain healthy and safe working conditions, equipment and systems of work for all employees, to provide such information, training and supervision they need for this purpose. We also accept a duty of responsibility for the health and safety of other people who may be affected by our activities.

The allocation of duties for safety matters and particular arrangements that we make to implement the policy are set out within the Practice's **Health and Safety policy dated April 2019 v.1**

Our Statement of General Policy is:

- to provide adequate control of health and safety arising from our work activities;
- to consult with our employees on matters affecting their health and safety;
- to provide and maintain safe plant and equipment;
- to ensure safe handling and use of substances;
- to provide information, instruction and supervision for employees;
- to ensure all employees are competent to do their tasks, and to give them adequate training;
- to prevent accidents and cases of work related ill health;
- to maintain safe and healthy working conditions; and
- to review and revise this policy as necessary at regular intervals.

The Practice Health, Safety and Environment policy and implementation procedures is managed by:

The Managing Director - Daniel Hurd
BA(Hons); Dip Arch (B'ham); M.Ed; RIBA

The significant Health and Safety risks associated with the activities and services we perform involves primarily safety whilst visiting sites. Full induction training is given to each member of staff and all visits are supervised by a Director/ and or a senior qualified member of staff. Personal protective equipment; including, as necessary, foot ware, high visibility jackets, hard hats, eye protection and gloves are provided.

2.2 GDPR Policy

DHA Architects is committed to high standards of information security, privacy and transparency. We place a high priority on protecting and managing data in accordance with accepted standards including ISO 9001 standards.

The company will comply with all applicable GDPR regulations effective in 2018, whilst also working closely with our clients/customers and partners to meet contractual obligations for our procedures, products and services.



DHA Architects were winners of the FEDERATION OF MASTER BUILDER—ENERGY EFFICIENCY AWARDS for its own bespoke office development at 33/33a Powell Street Offices - Midlands Regional Award.



QUALITY & MANAGEMENT

2.3 Quality

Daniel Hurd Associates are responsible for the architectural design and construction inspection of a wide range of work. This is predominantly for private commercial clients but also includes Government Departments, Local Authorities and multi-national companies.

It is DHA Architects quality objective to meet and exceed the expectations and needs of its clients. In order to demonstrate this DHA Architects have made a commitment to meet the standards required by EN ISO 9001, third party accreditation, by developing, implementing and maintaining a Quality Management System.

The Quality Management System operated by the practice and described in the Procedures Manual complies with the requirements of EN ISO 9001. Audits are carried out to demonstrate that the service provided meets these specified requirements. Periodically our system is reviewed by Interface NRM Ltd (Certificate No 2297 – 22/02/2017).

The Directors are responsible for ensuring that the requirements of EN ISO 9001 are sought, implemented and maintained. A Senior member of Staff is appointed as Quality Assurance Manager who reports directly to the Directors on the status and adequacy of the Quality Management System and make recommendations for any changes considered necessary.

To ensure the success of the Quality Management Systems every member of staff is made fully aware of all the procedures which affect his/her work and have access to all necessary documentation.

2.4 Environmental Management

Policy Statement

DHA Architects is committed to minimising the impact of its activities on the environment.

The key points of its strategy to achieve this are:

- Minimise and segregating waste and in evaluating operations and ensuring they are as efficient as possible.
- Actively promote recycling both internally and amongst its customers and suppliers.
- Source and promote product ranges to minimise the environmental impact of both production and distribution.
- Meet or exceed all the environmental legislation that relates to the Practice.
- Encourage the use of electric vehicles, public transport and use of bicycles utilising our location. Shower facilities and a company bike are provided.

A significant Environment risk associated with the services we undertake involves specify products. Our commitment to source and promote with our clients products which minimise the environmental impact extends to include transportation, life cycle replacement and maintenance factors.

DHA Architects premises is a solar power generator.



3.1 Construction Design Management

DHA Architects provide CDM-Construction Design Management Principal Designer Services.

On all projects a risk register is developed from the outset to evaluate, eliminate and control design risks arising from the project brief and design development.

Where required, the establishment of the risk register can include Environmental carbon reduction assessment in line with the principles of the 'Green Guide' to specification, and Life Cycle cost benefits form part of this analysis process to ensure that design optimisation is achieved.

3.2 Computer Aided Design

We recognise the enormous benefits that can be achieved with the intelligent use of IT. DHA Architects operates a fully networked computerised electronic system—Sharepoint cloud storage utilising a range of software at different stages of a project such as AutoCAD, ArchiCAD, Sketchup, Revit (BIM) and other 3D modelling design software.

We encourage electronic interchange of information with clients and consultants and tailor our channels of communication to suit each project.

The practice has successfully used web based design collaboration tools/information portals such as "Asite".

Accordingly, a practice **IT/GDPR policies** are in place to safeguard the use and storage of Information.

The Practice IT systems are remotely managed by an independent IT specialist Consultancy firm.



4.1 Organisational Chart

4.2 CPD—Staff Training and Development:

All members of staff are required to undertake CPD training in accordance with the quality and performance standards set out by the RIBA and to record all training undertaken each year.

A senior member of staff co-ordinates external training by recognised CPD certified organisations.

The Practice is a member of the Solihull Architectural CPD forum.

4.3 Core values:

Passion For creative, empathetic, safe and innovative design.

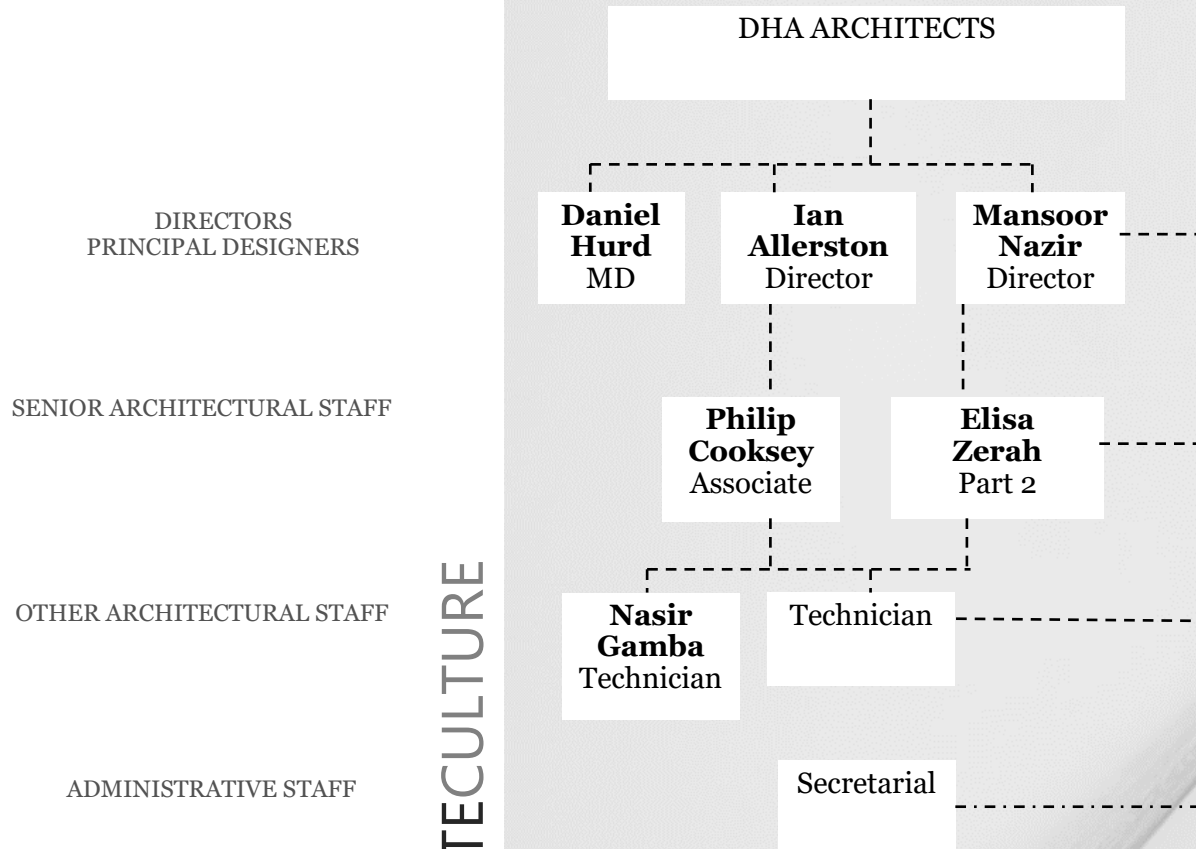
Respect For others' subjective opinions on design and collaborative input.

Strive For excellence, professional competence, award winning achievements and financial control.

Veracity In all matters.

Forward In our thinking, goals and expectations.

CORPORATE CULTURE



4.4 Employment Values

DHA Architects is committed to a comprehensive policy of equal opportunities in employment in which individuals are selected and treated on the basis of their relevant merits and abilities without regard to race, religion or belief, colour, sex, age, national origin, disability or sexual orientation and are given equal opportunities within the company. The aim of this policy is to ensure that no job applicant or employee receives less favourable treatment on grounds not relevant to good employment practice.



4.5 Equality and Diversity

Policy Statement

The policy and practice of the Practice require that all employees are afforded equal opportunities within employment and that entry into employment with the Practice and progression within employment will be determined only by personal merit and the application of criteria, which are related to the duties of each particular position. In all cases, ability to perform the job will be the primary consideration.

All employees have a duty to co-operate with this policy to ensure equal opportunities and to prevent discrimination. Employees must not harass or intimidate other employees on the grounds of race, religion or belief, colour, sex, age, national origin, disability or sexual orientation and must not victimise or retaliate against employees who make such allegations. Disciplinary action will be taken against any employee who breaches this policy and serious breaches will be treated as gross misconduct.

Code of Practice

The Practice welcomes diversity amongst its employees and seeks to ensure that all candidates for employment are treated fairly, and that selection is based solely on the individual's abilities and qualifications. The recruitment process must result in the selection of the most suitable person for the job having regard to experience and qualifications where necessary. As an employer committed to the principle of equality of opportunity, the company will adhere to the following procedure for recruiting and selecting individuals for all positions:

Selection Criteria

The selection process will be carried out consistently for all jobs at all levels. Selection criteria for all positions will be clearly defined and reflected in the further particulars sent to applicants, which will also include details of the Practice's commitment to equality of opportunity. Job qualifications or requirements which would have the effect of inhibiting applications from members of particular groups, such as those of one sex, persons of a particular religion, marital status or sexual orientation, persons of a particular racial group, persons within a certain age bracket or those with a disability, will not be demanded or imposed except where they are justifiable in terms of the job to be done.

Advertising

Job advertisements will be widely publicised so as to encourage applications from all suitably qualified and experienced people. In order to attract applications from all sections of the community, the company will endeavour to ensure that advertisements are not restricted to areas or publications, which would exclude or disproportionately reduce applications from a particular gender, religion, age group or racial group and should avoid prescribing requirements as to marital status or age. All job advertisements placed on behalf of the company will state the company's commitment to equality of opportunity.

Selection Methods

The selection process will be carried out consistently for all jobs at all levels. All those handling applications and conducting interviews must be aware of the principles of the Sex Discrimination Act, the Race Relations Act, the Disability Discrimination Act, the Employment Equality (Age) Regulations, the Employment Equality (Religion or Belief) Regulations, the Equality Act and other relevant legislation. The selection of new employees will be based on job requirements and the individual's suitability and ability to do the job and information sought from candidates will relate only to the qualifications for or requirements of the job.

4.0 TRAINING

To help meet the objectives of this policy the company will provide training that:

- increases awareness of the prevalence of and harmfulness of discrimination and prejudice on the grounds of race, religion or belief, colour, sex, age, national origin, disability or sexual orientation, and the needs and abilities of people with disabilities or other disadvantages;
- examines the nature of discrimination, both direct and indirect, and the ways in which it can occur and can be prevented;
- assists managers and employees to behave in ways that are non-discriminatory; and
- explains the operation of and access to grievance and disciplinary procedures.

5.0 PROMOTION

When considering candidates for promotion general ability will be the main requirement and no employee will be discriminated against on the grounds of race, religion or belief, colour, sex, age, national origin, disability or sexual orientation.

6.0 GRIEVANCE PROCEDURES

All allegations of discrimination on the grounds of race, religion or belief, colour, sex, age, national origin, disability or sexual orientation will be dealt with seriously and confidentially.

7.0 RECORD KEEPING

Details of candidates and of selection decisions (including the rationale for selection or rejection) will be kept for at least six months after an appointment has been made in case they are required as evidence by an employment tribunal or for other proceedings. The company will keep records of the sex, ethnic group, age and any disability of its employees and of all candidates and of those shortlisted and appointed.

Records may be used to determine whether members of one sex or persons of a certain racial group, religion or age bracket or those with a disability do not apply for employment or apply in smaller numbers than might be expected or are shortlisted or appointed in a lower proportion than their application rate or are concentrated in certain jobs. The company will investigate the practicalities of monitoring progression within employment, including access to training and development, promotion and grading.

8.0 REVIEW OF RECRUITMENT PRACTICE

Recruitment procedures and practices will be kept under review so as to ensure that this policy is being adhered to and to ensure that they do not include requirements or conditions which constitute, or may lead to, unlawful discrimination.

4.6 "Fair Payment":

The Practice, whilst holding bank loan facilities, rarely needs to operate with their deployment and seeks to settle invoices within 30 days as a rule.



5.1 Approach:

Central to our operational practice and as expressed in our core values is the emphasis we place on meeting our clients/customers requirements and expectations. This involves where applicable the creation of individual quality plans for the project, which identify communication methods, target dates, project drivers, budget and brief specifics.

Work stage reports and documents are geared to ensure that these criteria are implemented and gauged.

At every stage, our approach aims to express our passion whilst respecting those involved in the project and valuing their input within a professional empathetic and truthful way.

5.2 Design optimisation and delivery:

The deployment of AutoCAD, ArchiCad and Revit 3D BIM software systems enables us to develop design proposals which seek to optimise project specific requirements, whilst maintain industry standards and ease of shared information with other external consultants, specialists and contractors.

We also operate a partnering arrangement with a professional Building Control Consultancy organisation, which allows us to obtain essential design advice from an early stage to ensure that all proposals are developed within the appropriate regulatory framework.

Design team leadership and co-ordinated information production is essential for all successful and effective project delivery aims, we offer a 'one-stop' consultancy framework to minimise communication failures and co-ordination issues affecting the overall project.

5.3 Performance measurement:

Performance monitoring and evaluation is undertaken at each critical work stage to ensure that the project aims, objectives and provisions are being met and that these outcomes are communicated to all parties.

5.4 Supply procurement procedures:

Our procedure can best be described by evidencing the provision of our IT services contracted with Abussi Ltd:

- i). Initially introduced by recommendation,
- ii). interviews with the MD was held to explore capacity and service provision that matched needs,
- iii). References taken
- iv). Scope of service defined and competitively tendered
- v). Annual review with 3rd party independent consultant conducted
- vi). Evaluation appraisal meeting held with supplier.
- vii). Market position and capacity reassessed.
- viii). Price checked and renegotiated for further 12 months

6.1 Business Strategy:

Following formation in 1994 by Managing Director, Daniel Hurd, a Chartered Architect with over 15 years experience in practice, the practice has grown steadily over the years and in 2007 moved into bespoke offices in the Jewellery Quarter of Birmingham's City centre.

The new offices provide a total of 4,500 sqft split into 2 units to enable future growth and development to occur.

Currently, we are developing our marketing strategy to respond to the emerging internet based opportunities. Central to this work has been the redesign in house of our website to create an adaptive and interactive tool.

6.2 Market position:

As a small practice, we are able to offer specialist services that are adaptable to project/client needs and response times. All staff are architecturally trained and capable of working with the design software offered as part of our standard services.

The Practice is a progressive award-winning architectural practice, providing a wide range of expertise in architectural, conservation, master planning, interior design, project management and health and Safety Coordinators services.

We work in all sectors, but have particular expertise in delivering individual and imaginative buildings in a variety of specific sectors including healthcare, commercial, ecclesiastical, health, residential, social and education projects.

We also have a great deal of experience working with listed buildings and on a wide variety of conservation projects.

6.3 Competitive difference:

We offer personalised and cost effective services, which incorporate 3D modelling visualisation from sketch scheme to completion. Included with our modelling software are measure quantities for early cost analysis and appraisal.

DHA Architects are qualified CDM-Principal Designers and can advise immediately on all initial construction health and safety matters within the earlier stages of the brief development.

The Practice works with both traditional and non-traditional construction methods and has significant experience in building conservation.

6.4 Key success factors:

The key success factors in developing our trading relationship would include:

- i). Clarity of design documentation
- ii). Availability and speed of response
- iii). Thoroughness in design development
- iv). Effective delivery and time management



Practice

Established 1994
3 Directors, Associates and
Qualified Staff
3 RIBA Chartered Practice
ISO 900 system.

Services;

Architectural Design
Interior Design
Contract Administration
Master Planning
Dementia Audit
CDM
Cost Control
Sustainability Statements
Heritage Assessments

Systems;

2d/3D Modelling
BIM integration
'Code' and BREEAM
compliant design
Renewable technologies
Design for carbon reduc-
tion
Practice sustainability
policy.

PRACTICE OVERVIEW

DHA have been working with the NHS, private healthcare and charitable organisations for over two decades and have delivered a vast array of projects in Acute Care, Mental Health and Primary Care, including GP Surgeries and Listed Buildings.

With the high degree of technical expertise required, the unique practical and strategic factors to take into consideration, and increasing pressure on budgets at all levels, providing professional services in the healthcare sector demands both skill and experience. The budgets for these projects tend to be significant and the degree of planning sophistication required demands highly competent multi-disciplinary skills – experience that DHA hold in the required depth.

We help our clients to create economies and efficiencies from inception through to delivery without compromising on the quality of the finished product. We are adept at understanding the challenges associated with construction in highly technical, occupied environments and are able to deliver complex projects with minimal disruption to services. DHA always adopts a client-focused approach to project management, which serves to optimise the estate, providing practical and creative designs, whilst ensuring best practice and regulatory compliance.

Interior design and environmental sustainability have a significant role to play in the delivery of these projects and this is integral to our design development.

Increasingly, our input is required at a strategic level. We provide advice on master planning, producing development control plans to support the Estate Strategy. We have contributed to a number of significant business cases for healthcare development and are familiar with the steps required to meet the requirements of the NHS capital investment manual.

We are familiar with all of the key computer software systems required to deliver compliant technical solutions for our clients in the healthcare sector.

Other areas of Expertise

- Dementia Care working with University of Stirling Dementia Services Development Centre
- Elderly persons residential and nursing care
- Mental health
- Design for disability
- Ecclesiastical restoration and new build.
- Listed Building and Conservation areas
- Regular CPD Seminars and new modelling techniques.



danielhurdassociates
chartered architects

Approach

- Directors' hands-on approach
- Design rooted in strong analysis of context and brief
- Contemporary approach where appropriate but strong understanding of traditional design and methods of construction

PRACTICETEAM/APPROACH

Daniel Hurd—Managing Director BA (Hons) Dip Arch (Birm) Med (theo) RIBA

- Practice Founder
- Specialist design experience in all forms of ecclesiastical, healthcare and education projects in both new and conservation contexts.
- Masters degree in Education—Theology/Catechises—And an Ordained Minister—Roman Catholic Deacon for the Archdiocese of Birmingham.

Ian Allerston— Director BA (Hons) Dip Arch (Birm) RIBA

- Specialist design experience in conservation, restoration, social /private housing, education and community projects.

Mansoor Nazir—Director BA (Hons) Dip Arch (Birm) RIBA

- Specialist design experience in conservation, restoration, mental health/nursing Care, special educational needs.
- Individually designed residential houses

Phil Cooksey—Associate BA (Hons) March Dip Arch (Leics) RIBA

- Graduated with First Class Honours at DeMontfort University, Leicester. And registered with the RIBA. Awarded Best MARCH for design, LRSA award for sustainable design.

Elisa Zerah

- Double Graduated in Urban Planning and Architecture with the equivalent of First Class Honours at the Università' di Architettura di Genova (Italy). After the Bachelor Degree in Urban planning, Elisa has completed the Master Degree in Architecture in 4 years instead of 5. She is practicing and studying to achieve her architect qualification both in the UK and Italy.

Nasir Gamba

- First Class award with Honours in interior architecture and property development from the university of Wolverhampton



DANIEL HURD

BA (Hons) Dip Arch (Birm) MEd
RIBA

- 1994-Present



DHA ARCHITECTS

PERSONALCV

Practice founder and principal architect since its formation in 1994.
Member of the RIBA, qualified CDM Health and safety Principal Designer.
Roman Catholic Deacon for the Archdiocese of Birmingham.

Design and project management in the following sectors:
Healthcare, Commercial, Private Housing, Education, Master planning, Community,
Conservation, Restoration, Ecclesiastical, Social Housing projects.

Bonham Reynolds Associates (Birmingham) - 1989 - 1994 *Associate*

Associate Manager for medium-sized practice, focusing on commercial, industrial, retail
and ecclesiastical projects.

Temple Cox Nicholls (Birmingham) 1987-1989 *Architect—Team Leader*

Peter Hing and Jones (Birmingham) 1984-1985 *Assistant Architect*

IAN ALLERSTON
BA (Hons) Dip Arch (Birm) RIBA

- 1999-Present



PERSONALCV



DHA ARCHITECTS

Member of the RIBA.

Design and project management in the following sectors:
Healthcare, Conservation, Restoration, Ecclesiastical, Social Housing, Private Housing, Education, Community Projects.

Aukett Associates (London) - 1996-1998

Architectural assistant

Experience on a wide variety of projects all over Europe for international multidisciplinary practice, including:
Master planning, Warehouse /distribution, Education, IT, Speculative offices, Residential, Conservation



MANSOOR NAZIR
BA (Hons) Dip Arch (Birm) RIBA

- 2002-Present



DHA ARCHITECTS

PERSONALCV

Member of the RIBA.

Design and project management in the following sectors:

NHS, private healthcare and charitable organisations and have delivered a vast array of projects in Acute Care, Mental Health and Primary Care, including educational projects focused on Children with special education needs (SEN).

Mansoor is actively involved in promoting better children services in Birmingham and currently helping SENAR, NHS Birmingham Cross City CCG with developing new systems around the delivery of personal budgets and Education Health Care Plans (EHC).

DTA Design Engineers - 2001 – 2002

Design Engineer:

Structural design for a structural & civil engineering practice providing a comprehensive range of services, including designing in aluminium, glass & plastic along with traditional steel, concrete, masonry and timber. The practice developed a good reputation for unique, individualised building designs. Some key projects include the Balconies at Custard Factory Digbeth, Floating Stairs inside Medical practices in Harley Street, London, Sikh Community Centre, Wembley.

Panton Sargent Architects & Designers - 1998 – 1999 **Grade II Architect**

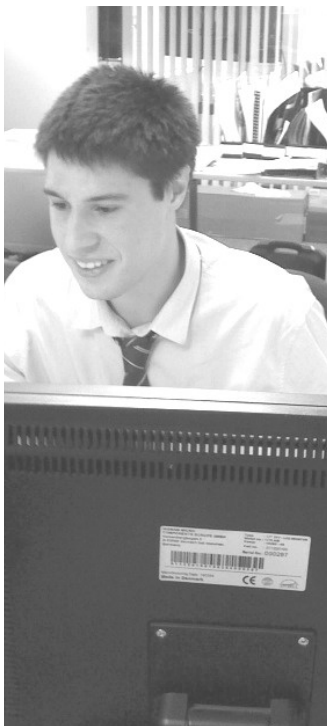
Involvement in developing new Primary Care Centres from initial feasibility to full working drawings, working mainly with modern procurement methods contracts including Design & Build and PFI/PPP Projects.

David Thorpe Architect - 22 Feb 1995 - 1998 **Assistant Architect.**

Self-build housing types, Domestic Extensions, Barn Conversions.

PHILIP COOKSEY
BA (Hons), MArch,
Dip Arch (RIBA 2017)

- 2011-Present



PERSONALCV

Member of the RIBA.

Graduated with First Class Honours at De Montfort University, Leicester. Nominated for the 2011 RIBA Bronze Medal Award, Received the 2011 LRSA award for sustainable design and Awarded best 2015 MArch student for design.

Experience in following areas, assisting project directors:
Healthcare, Retail, Conservation & Restoration, Adaptive Re-use, Ecclesiastical, Social Housing, Private Housing, Education, Community

Currently teaches 1st Year Architecture part-time at De Montfort University, Leicester.



DHA ARCHITECTS

NASIR GAMBA

BSc (Hons)

Interior Architecture And Property
Development

- 2015-Present



DHA ARCHITECTS

PERSONALCV

Nasir has developed a keen interest in BIM and 3D Modelling through his vast knowledge of software programmes on the market.

Experience in following areas, assisting project directors:
Private Housing, Community.

Education 2011-2014

BSc (Hons) Interior Architecture and Property Development First Class

Draftsperson

Telling Architectural 2014-2015

Expert in range of cladding systems i.e GFRC, Terracotta cladding systems, Lithodecor Glass etc. Main duties creating spread sheets, quantifications, and creating sub-structure drawings using Autocad and Autodesk Revit.

My experiences as a Designer have shaped and formed me into a diverse and bespoke individual with exceptional attention to details. As a hardworking, passionate designer, I excel within team situations and on an individual basis. Reliable, self-motivated and with determination to succeed, are the qualities I possess to produce professional and conceptual design work at industry standards.

ELISA ZERAH
Architectural Assistant

- 2018-Present

Elisa joined the practice 2018 and has quickly become a key member of team.

Double Graduated in Urban Planning and Architecture with the equivalent of First Class Honours at the Università di Architettura di Genova (Italy). After the Bachelor Degree in Urban planning, Elisa has completed the Master Degree in Architecture in 4 years instead of 5. She is practicing and studying to achieve her architect qualification both in the UK and Italy.

Experience in the following areas, assisting project directors:
Housing, Education, Care Homes.

Local Council – Technical Department -2012

Architectural Assistant

Assisted project directors. Areas: Urban Planning, Private Housing, Public Sector



PERSONALCV



DHA ARCHITECTS



Sectors we cover

Ecclesiastical
Health
Education
Residential
Community
Conservation
Commercial



DHA ARCHITECTS

www.dhaa.co.uk

