

Conservation + Restoration Portfolio

2019



Small Professional Practice
Chartered Practice
Qualified Staff
Quality Systems
Vast Experience
3D technology
CDM Services

DHA ARCHITECTS

www.dhaa.co.uk



The Round Tower, Siddlington

RIBA Stages D-L

Refurbishment + Extension

DHA Architects were commissioned to assist with completing the detailed design of this unusual conversion and extension to a Grade II listed Victorian folly in the Cotswolds.

The project comprised the change of use of the existing building and the construction of 2 further new apartment buildings within the grounds.

Key to the success of the project was a detailed understanding of the existing buildings and the sensitivity of the context.



DHA ARCHITECTS

Conservation + Restoration



Pitmaston, Birmingham

RIBA Stages 0-7

Master Plan + New Build

This project initially involved the production of a master plan for development of The Ideal Benefit Society's headquarters site in the Moseley district of Birmingham.

The building and everything within its grounds are Grade II Listed, and so local authority conservation officers took a very close interest in the project.

The proposals which were brought forward included the conversion of all the buildings to residential use, and the construction of 2 new apartment buildings within the grounds. Key to the success of the project was a good understanding of the existing buildings and the sensitivity of the context.

A total of 67 dwellings were consented on the 6 acre site.



DHA ARCHITECTS

Conservation + Restoration



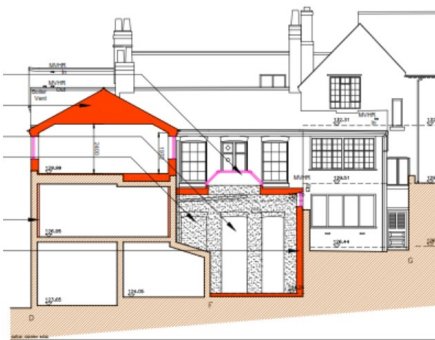
Great Cornbow, Halesowen

RIBA Stages 0-4

Change of Use, Refurbishment + Extension

DHA were appointed to obtain planning and listed building consent to create 14 self-contained apartments within this row of early 20th century buildings, including ground floor retail space.

The proposal also creates green spaces to the rear of the buildings to give external garden space to the ground floor flats. It also includes ground and second floor extensions to make the most efficient use of the site, whilst maintaining and enhancing the historic character of the buildings.



DHA ARCHITECTS

Conservation + Restoration



Aynhoe Park, Aynho

RIBA Stages A-D

Restoration + Development

DHA Architects have undertaken several projects at Aynhoe Park over several years as part of a wider scheme to restore the original house and parklands and create a financially viable heritage and cultural centre.

A change of use scheme was undertaken to change the 2 wings from office use to guest accommodation.

Planning approval has been obtained to restore the original Capability Brown parklands, financed through an enabling development of 3 large detached houses within the grounds.

Conservation + Restoration



DHA ARCHITECTS

Norton Barns, Tewkesbury

RIBA Stages A-L

Conversion

Our client bought this challenging former reclamation yard, to convert the existing warehouses to residential use, and to construct new dwellings where possible on the site.

The result was the conversion of the existing warehouse buildings to create 9 family houses set around a shared courtyard, and the construction of 4 semi-detached cottages to Code for Sustainable Homes Level 3.

The site had many difficulties including contamination from its former uses, a challenging planning authority and the Code requirements on the new properties.

Conservation + Restoration



DHA ARCHITECTS



Southgate Street, Gloucester Docks

RIBA Stages A-D

Refurbishment + Redevelopment

DHA Architects were appointed to develop a residential scheme which comprised the change of use of 2 existing late 19th Century townhouses alongside a new build apartment block on a vacant parcel of land within the Docks Conservation Area.

Extensive historical analysis led to the proposal for a sensitive three and a half storey apartment block with ground level parking below the building.

The form of the proposed building responded closely to the historic grain and architectural styling of the immediate context.

Conservation + Restoration



DHA ARCHITECTS